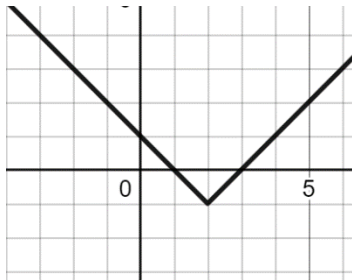
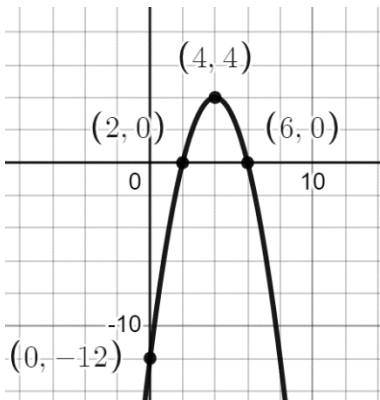


W22 MAT 1070 Final Exam Key

1. $y = -\frac{4}{3}x + 4$
2. a. $f(-4) = -7$
b. $f(2) = 1$
3. a. 21
b. $\frac{3}{4}$
c. $8x^4 + 16x^2 + 10$
4. $-4x - 2h$
5. a. Domain: $[-5, 3]$
b. Decrease: $(-5, -2), (-2, 1), (2, 3)$
c. $f(-2) = 3$
d. $\{1, 3\}$
6. $(-\infty, 0) \cup (0, 9) \cup (9, \infty)$
7. $x = 10$
8. $\{-5, 9\}$
9. $x = -1$
10. $x = 3 \pm i$
11. The rug measures 8 ft. by 10 ft.
12. The graph of $y = |x|$ is shifted 2 units to the right and one unit down to obtain the graph of $y = |x - 2| - 1$.

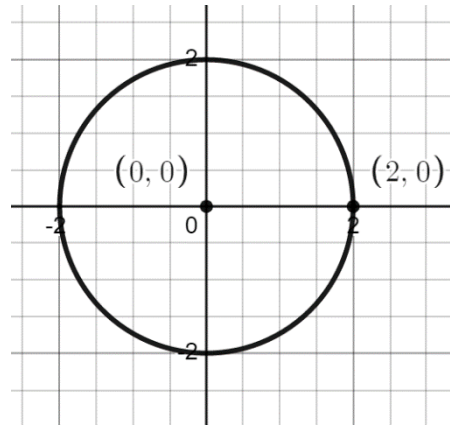


13. $\{1, 81\}$
14. a. $(4, 4)$
b.



15. $(-\infty, -2) \cup [4, \infty)$
16. a. 3
b. -2
c. $\frac{1}{4}$

17. He has taken 17 3-credit classes and 6 4-credit classes.
18. a. circle
b.



19. $x = -5$
20. The height is 4 ft, the width is 2 ft, the length is 12 ft.